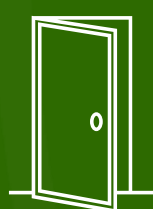


Experience-First Networking

Maximize user and IT experiences with
secure client-to-cloud automation,
insight, and AI-driven actions.



Enter

Have you ever heard someone say
“**The Wi-Fi Sucks,**”
but all your dashboards and event logs say the network is working just fine?

Have you received a complaint that
“**The internet isn’t working,**”
but there are no records of A WAN service issue in your area?

Or has the comment,
“**My application is slow,**”
left you scrambling to determine if there really is a network or security problem... or is it just the user’s perception?

All too often, there is a disconnect between network performance and user experience, which gets worse as the number of users, devices, and applications grow in a given environment. But “**up**” and “**available**” are not the same as “**good**,” and just passing traffic is no longer an acceptable measurement of a successful IT infrastructure.

Experience-First Networking.

Juniper knows that experience is the first and most important requirement for networking in the cloud era.

This is why we are focused on putting our users — the network architects, builders, and operators — at the center of all that we do, so that to their users — the salesperson giving a demo over video call, the associate using a point-of-sale scanner in a store, the students watching Netflix in their dorm rooms, and the developer coding the next billion-dollar app — are as happy and productive as possible.

This requires a relentless focus on experience, from when customers first engage with us to how they deploy and manage our solutions on a day-to-day basis (including upgrades, troubleshooting, and feature rollouts).

Maybe a short-handed enterprise IT team has to deploy and troubleshoot a software upgrade in 1,000 retail stores. Or a network security manager has to protect application servers from new ransomware without inadvertently impacting the application services. Or a cloud architect working for a hot digital consumer company needs to quickly deploy and tune new services as their growth continues to accelerate.

By making applications and data the network's priority, we enable our users to build agile networks, leverage CI/CD and DevOps approaches, and lead the digital transformation that they're all driving.



The Right Architecture for Client-to-Cloud Experiences



There are four fundamental pillars that are key to Juniper's experience-first enterprise platform:

1 Assured end user experiences.

While other solutions provide visibility to the site or application, Juniper provides visibility all the way down to the individual client, application, and session to optimize individual user experiences.

In addition, only Juniper has a common schema for applying customizable service levels from client-to-cloud (i.e. across the LAN/WLAN/WAN) as well as closed loop assurance in the data center and WAN.

Juniper lets you set and measure key metrics and proactively assure optimal user experiences on an ongoing basis.

2 Proactive automation.

Automation is key to lowering ongoing operational costs and maximizing IT efficiencies. Juniper leads the industry in open programmability and defined intent-based networking to provide control, observability, and root cause identification. And we don't stop there. We are a leader in AIOps, which extends AI-driven insight for real-time actions, such as Self-Driving Network™ operations.

In addition, AI is used for network support, enabling problems to be addressed proactively and with minimal disruption to IT personnel.

3 Cloud-now and cloud-ready.

Juniper is leading networking in the cloud era — from cloud-native workloads and managing devices across multiple cloud instances, to cloud-hosted operations for troubleshooting, feature delivery, trending analysis, reporting, and more.

4 Connected security with real-time threat awareness.

By making the network threat-aware, our customers are able to detect and stop advanced threats in a much shorter timeframe, which keep their network pipes free and clear for business-critical traffic. Once a threat is detected, intelligence and protections are distributed to other enforcement points across their network, whether it's a router, a switch, a Wi-Fi access point, or a firewall.

This is where Juniper stands out, with our unique connected security approach delivering proven protection where it is needed most (e.g. 100% effectiveness score with zero false positives on the latest ICSA certification test), consistent security policies that can be created once and easily applied to any application traffic flow in both public and private cloud environments, and sophisticated policy and segmentation based on current risk profiles.





None of this can happen in a vacuum. For automation, insight, and AI-driven actions to deliver maximum results from the client all the way through the cloud (or several clouds), they must be coordinated. More specifically, correlation is required across the WLAN, LAN, WAN, data center, and security domains to deliver cohesive operations and experiences.

Let us put this into perspective with an example we all can relate to.

Yesterday, Bob's video call dropped. Why? Was it his Wi-Fi? A bad ethernet cable on his router? The application server in the cloud/data center? A new security policy? Malware on his computer? Or his internet/WAN connection?

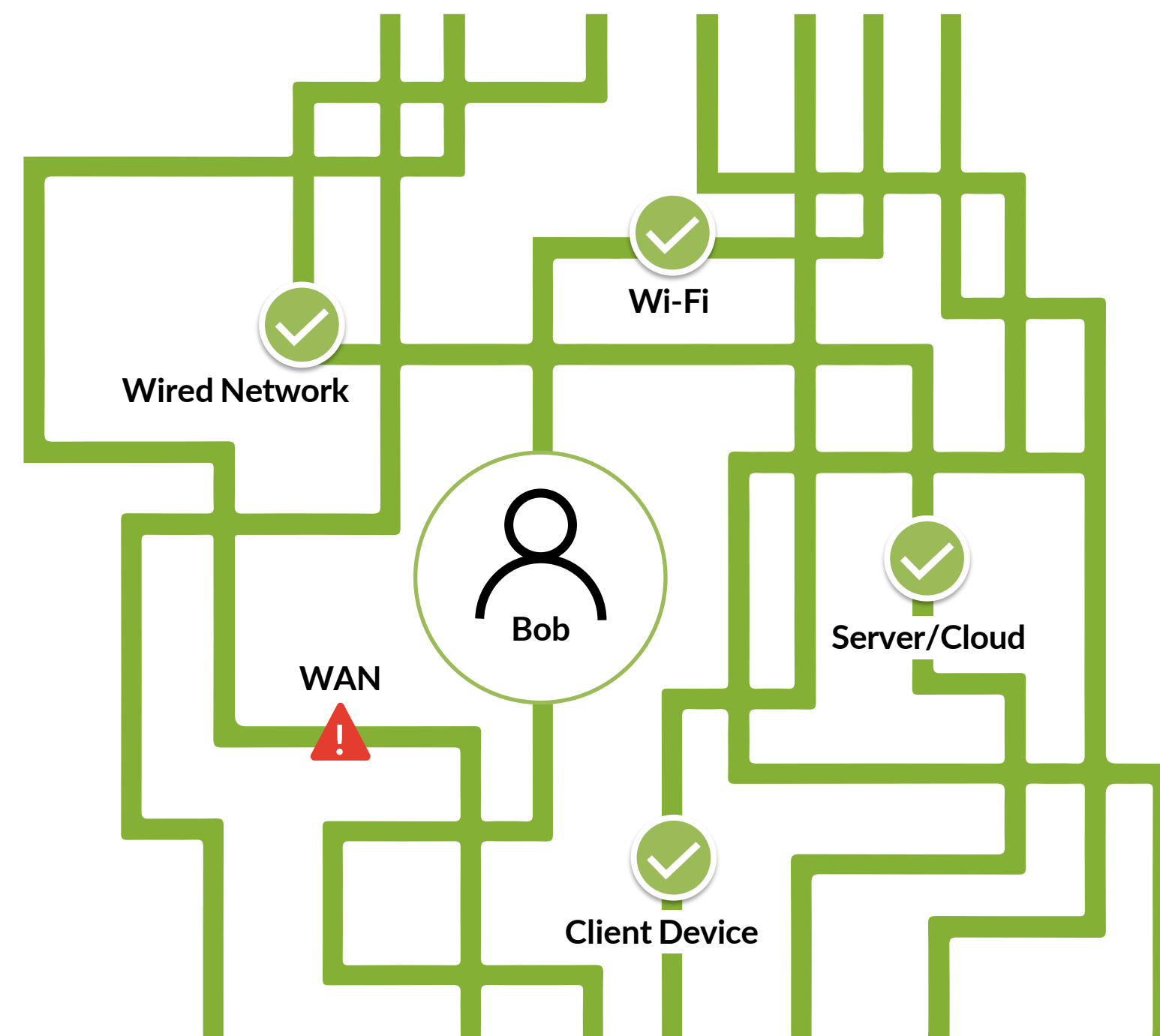
With end-to-end service levels, event correlation, anomaly detection, and self-driving functionality, you can easily discover the issue and fix it before Bob even knows there is a problem.

Juniper picks up where other solutions stop. We know that even though the network is up, Bob's experience is not good. And we know these things proactively, often before a user complains or a ticket is opened.

That's experience-first networking.



What was wrong with Bob's video call yesterday?



Streamline Operator Experiences

The delivery of experience extends beyond what is going on for the user. This assured user experience depends on the experience and means of the operations team. Better automation, insights, and AI in operational toolsets helps them to more quickly and efficiently deliver new apps and services, assure the user experience and security, and make repairs and changes when needed.

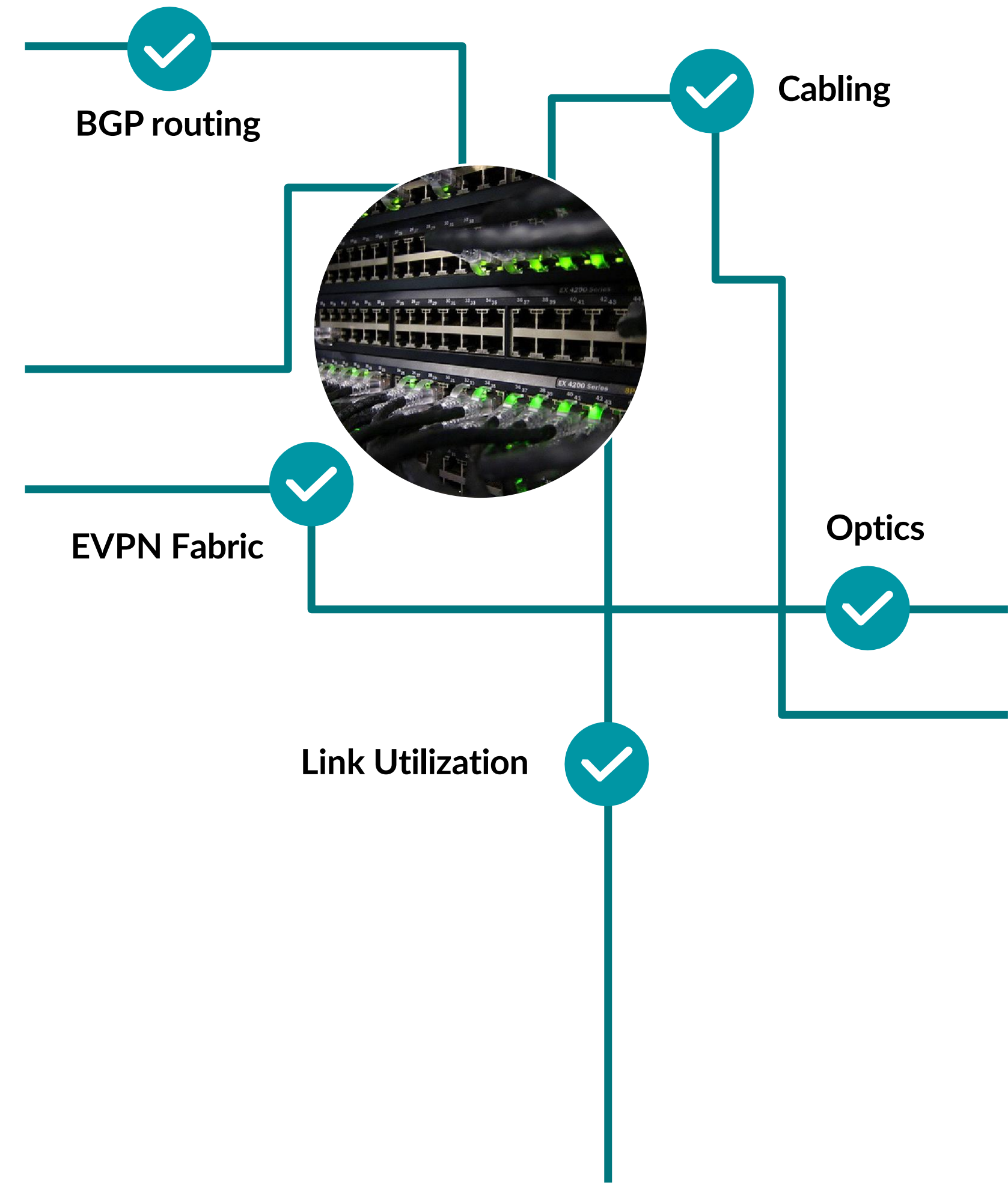
Here's an example from the operator's point of view.

It's a refrain we've heard before — the application isn't functioning correctly, so it **must** be the network. The ability to quickly diagnose where the problem lies is key to getting the network fixed, or as is often the case, shortening the mean time to innocence.

Could the issue be caused by an external routing issue? Something internal to the network fabric? Security policy? Bandwidth or cabling? It can be a major headache to sort through all the possible areas of failure to find the root of the problem. AI in operational toolsets paired with years of network service expertise when you need it enables you to fix your network quickly.

Having a single source of truth for your network allows network operators to specify exactly how they expect their network to operate and ensure that the network's function is continuously validated against that intent — if there is deviation, the system generates an anomaly. Further, the approach enables observability across teams, proactive discovery of potential issues, and eases change management.

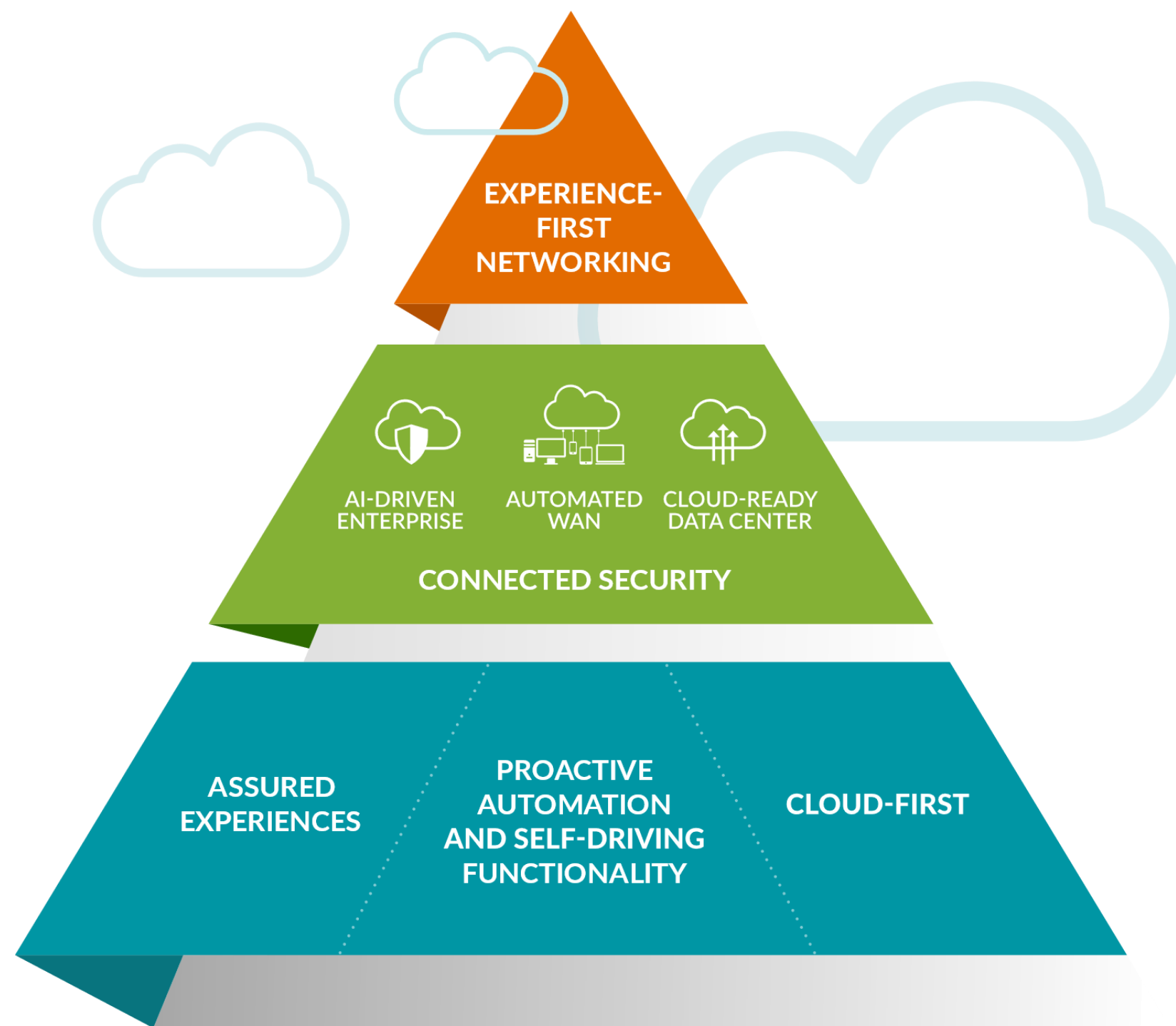
That's putting experience for the operations team first.



The Juniper Enterprise Portfolio: When Experience Matters



Juniper provides a complete client-to-cloud enterprise solution that encompasses three components to deliver the best IT and user experiences.



The Juniper experience-first solution has the following networking components, each equipped with security built in to make them threat-aware:

AI-Driven Enterprise

which includes wired and wireless access, network access control, and SD-WAN-all driven by Mist AI.

Automated WAN Solutions

for linking different offices and data center facilities with reliable connectivity.

Cloud-Ready Data Center

for simplified underlay/overlay management with intent-based automation and assurance.



AI-Driven Enterprise: Wired/Wireless Access.

Wireless is more business critical than ever, but traditional WLAN solutions are over a decade old and lack the agility and elasticity to support the rapid growth in mobile devices, IoT, and applications.

Juniper changed the WLAN game with a revolutionary modern cloud-native platform that leverages Mist AI to:



Lower IT costs

with AIOps, self-driving network functions and Marvis® – our conversational Virtual Network Assistant.



Assure better user experiences

with full-stack service levels, proactive remediation, personalized location services, and security.



Bring agility to the network

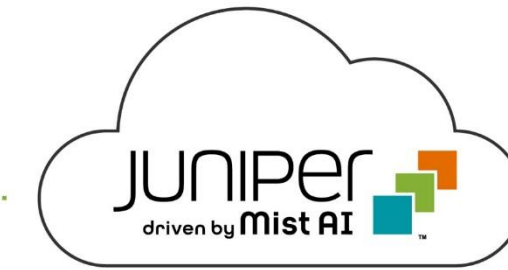
through a microservices architecture that enables weekly updates to adapt to new devices and applications being deployed in our customers' networks.

By leveraging the years of learning that Marvis has performed in the wireless domain, Juniper has brought unprecedented insight and automation to wired access and the WAN edge by bringing all these attributes to Juniper® EX series switches, Session Smart™ Routers, and SRX Series Firewalls.

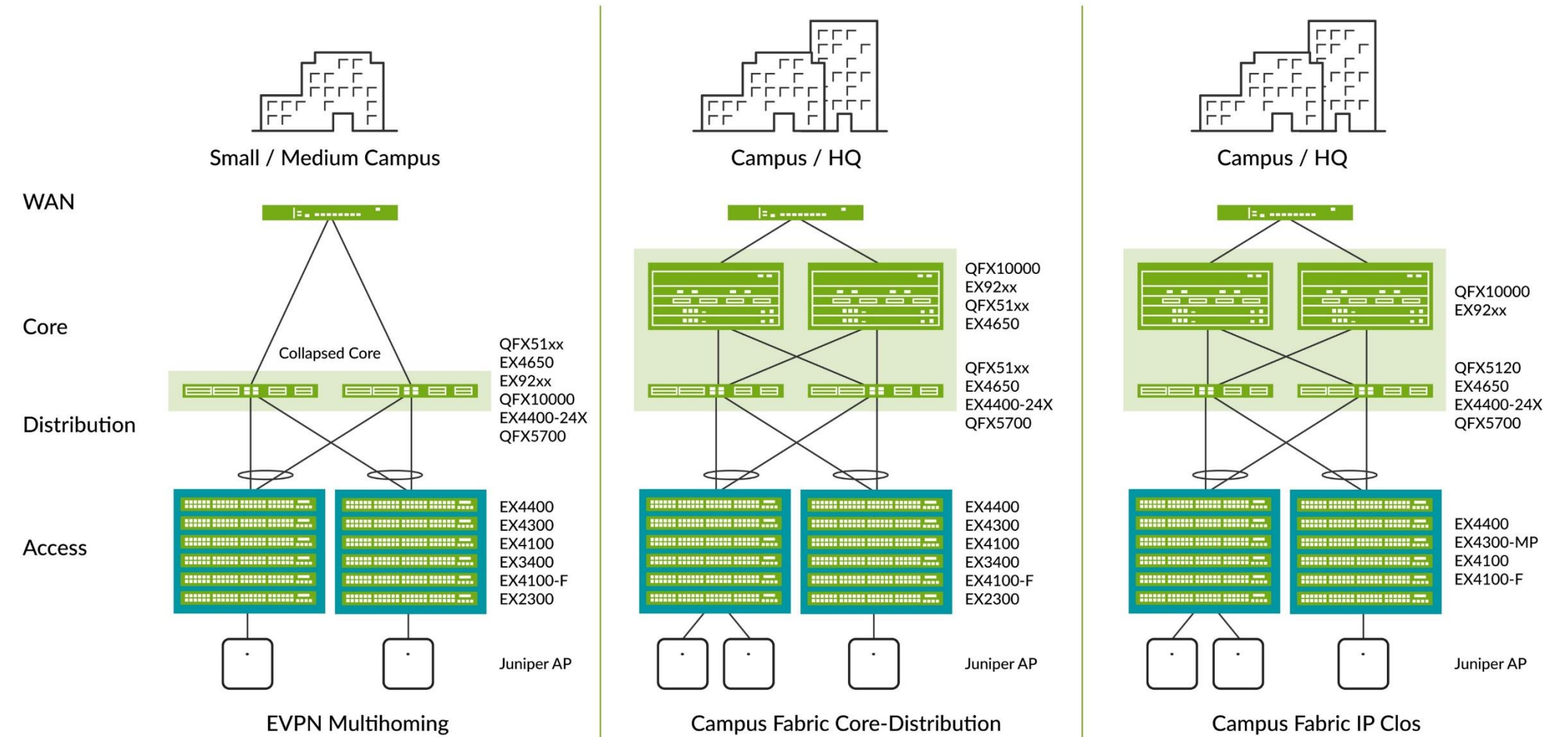
Key differentiators of the Juniper solution for wired and wireless access driven by Mist AI:

Simplified Campus Fabrics

Easily deploy common standards-based campus fabrics, such as EVPN multihoming, EVPN core/distribution and IP Clos, automating group-based policies and enabling microsegmentation.



EVPN-VXLAN
Virtual Chassis



Key differentiators of the Juniper solution for wired and wireless access driven by Mist AI (cont'd):

Dynamic packet capture (without human interaction) for easy and accurate data collection without truck rolls.

Automated event correlation across the wired, wireless, WAN, and security domains for fast root cause identification and remediation.

Programmable workflows for 100% API-driven network operations.

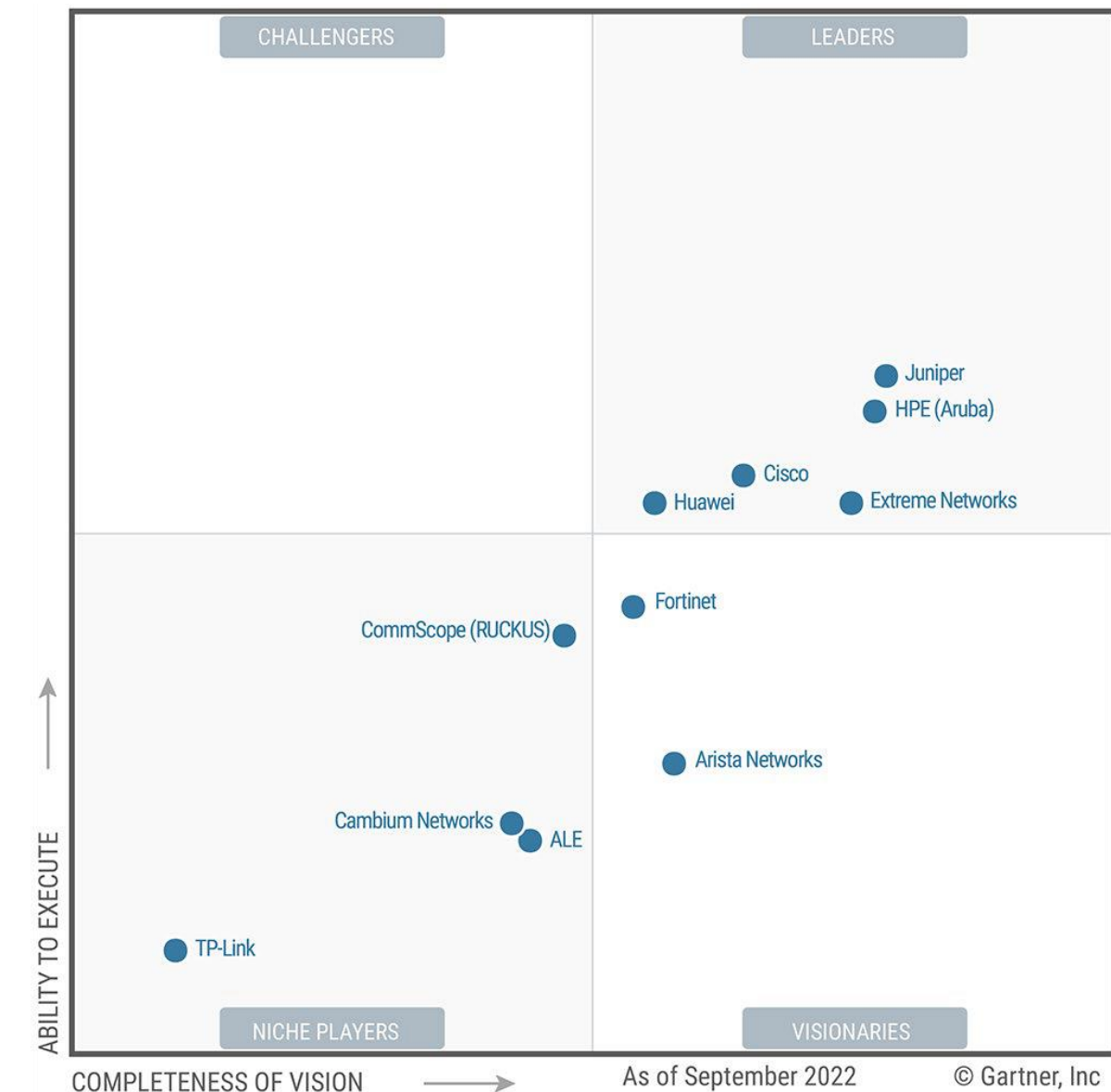
Virtual Bluetooth LE and integrated IoT which bring the benefits of indoor location without extra hardware (e.g. no battery beacons) and software.

Risk profiling for wired/wireless allows administrators to quickly assess security risks when users and devices connect to access networks, and take appropriate action if required, such as quarantining or enforcing policies.

2022 Gartner Magic Quadrant for Wired & Wireless LAN Access Infrastructure.

Juniper has the furthest position of any vendor in both Ability to Execute & Completeness of Vision.

Figure 1: Magic Quadrant for Enterprise Wired and Wireless LAN Infrastructure



Gartner Magic Quadrant for Enterprise Wired and Wireless LAN Infrastructure, Mike Toussaint, Christian Canales, Tim Zimmerman, December 21, 2022.

This graphic was published by Gartner, Inc. as part of a larger research document and should be evaluated in the context of the entire document. The Gartner document is available upon request from Juniper Networks.

Gartner does not endorse any vendor, product or service depicted in its research publications, and does not advise technology users to select only those vendors with the highest ratings or other designation. Gartner research publications consist of the opinions of Gartner's research organization and should not be construed as statements of fact. Gartner disclaims all warranties, expressed or implied, with respect to this research, including any warranties of merchantability or fitness for a particular purpose.

Gartner® and Magic Quadrant™ are trademarks and service marks of Gartner, Inc. and/or its affiliates. All rights reserved. Gartner does not endorse any vendor, product or service depicted in this content nor makes any warranties, expressed or implied, with respect to this content, about its accuracy or completeness, including any warranties of merchantability or fitness for a particular purpose.

Key differentiators of the Juniper solution for indoor location services.

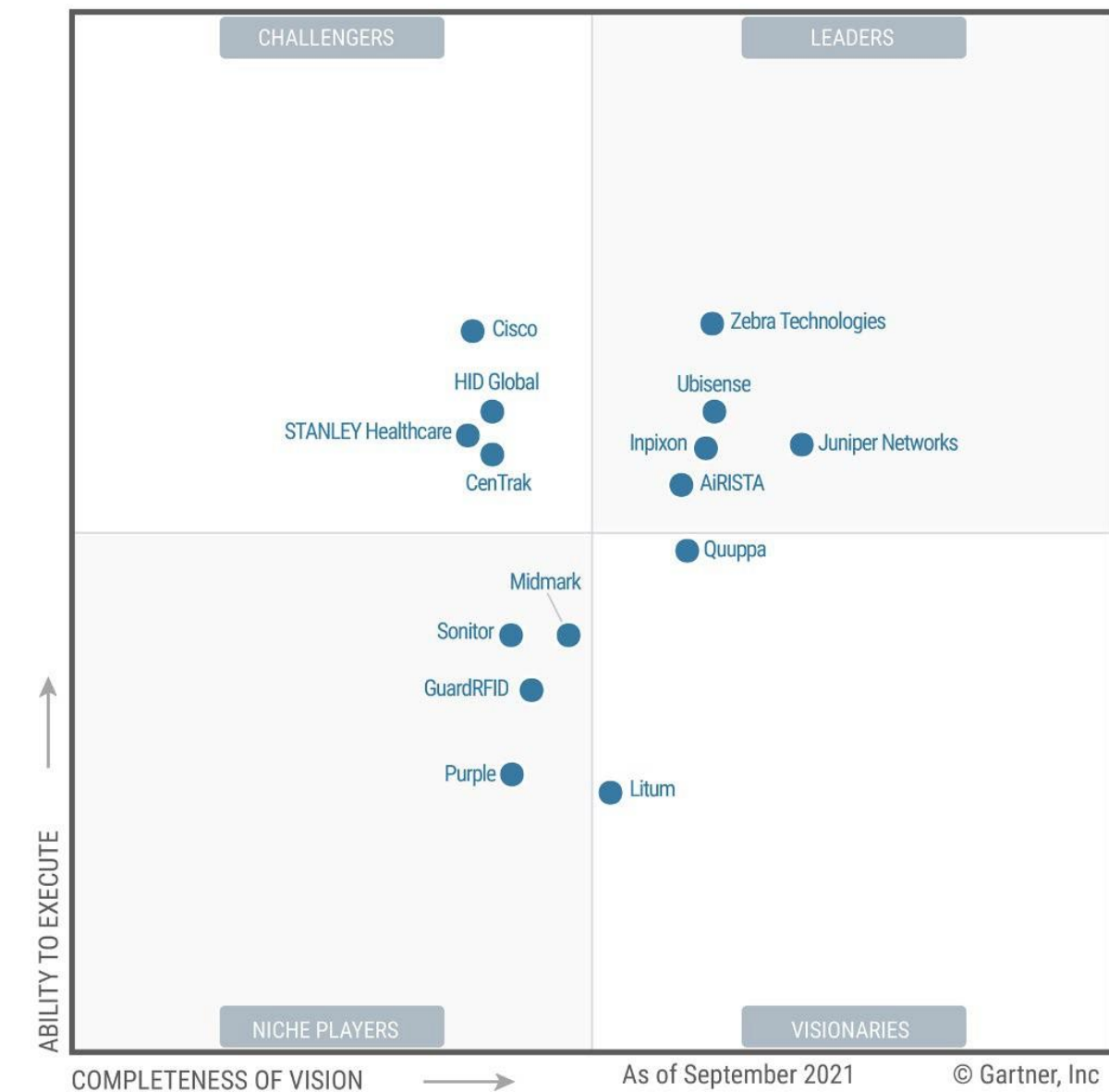
We believe that our focus on customer experience has led to Juniper's placement in this year's Magic Quadrant. We offer:

- Highly accurate location service using patented virtual BLE technology
- Simplified deployment and operations enabled by Mist AI and 100% API-based platform
- Comprehensive analytics platform
- Rich portfolio of partner solution integrations
- Very positive customer feedback on experience with Juniper

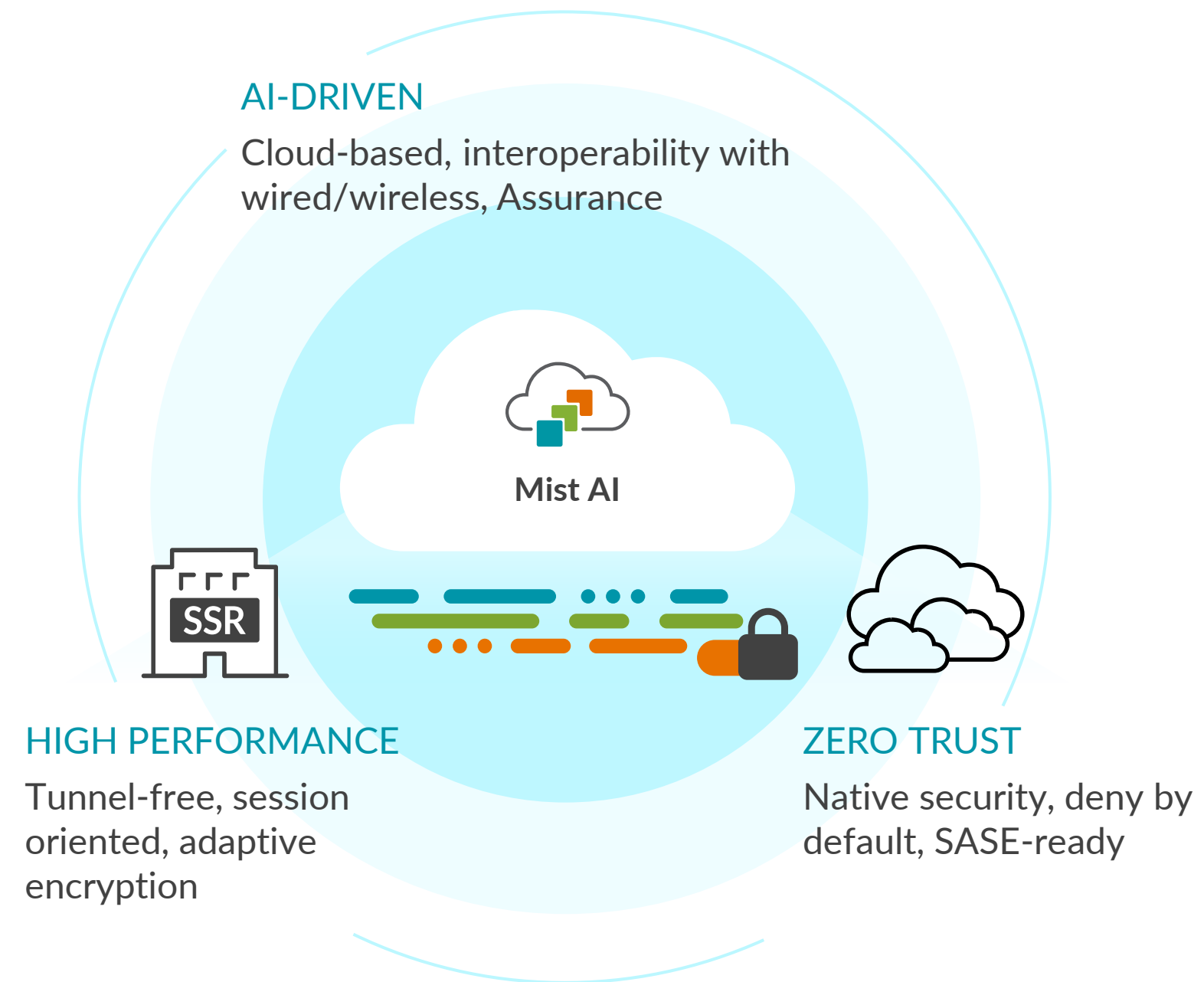
2023 Gartner® Magic Quadrant™ for Indoor Location Services

Gartner has positioned Juniper as a Leader and furthest in Completeness of Vision.

Figure 2: Magic Quadrant™ for Indoor Location Services



Gartner Magic Quadrant for Indoor Location Services, Tim Zimmerman, Annette Zimmermann, February 21, 2023. Gartner does not endorse any vendor, product or service depicted in its research publications, and does not advise technology users to select only those vendors with the highest ratings or other designation. Gartner research publications consist of the opinions of Gartner's research organization and should not be construed as statements of fact. Gartner disclaims all warranties, expressed or implied, with respect to this research, including any warranties of merchantability or fitness for a particular purpose. Gartner®, Magic Quadrant and Peer Insights™ are trademarks of Gartner, Inc. and/or its affiliates. All rights reserved. Gartner Peer Insights content consists of the opinions of individual end users based on their own experiences, and should not be construed as statements of fact, nor do they represent the views of Gartner or its affiliates. Gartner does not endorse any vendor, product or service depicted in this content nor makes any warranties, expressed or implied, with respect to this content, about its accuracy or completeness, including any warranties of merchantability or fitness for a particular purpose.



AI-Driven Enterprise: Juniper SD-WAN, driven by Mist AI

Juniper SD-WAN, driven by Mist AI and with Session Smart Networking, is an experience-first solution designed to deliver resilient WAN performance, Zero Trust security, and AI-driven automation and management.

By combining Mist AI with the industry's only tunnel-free WAN routing software, IT admins get simplified operations while end users benefit from exceptional application experiences.

Eliminating tunnels in WAN connectivity reduces unnecessary overhead, minimizes network latency, and replaces outdated and cumbersome network policies with those that are easier to set up, manage, and scale.

Mist AI integrates SD-WAN management alongside the wired and wireless domains, providing unmatched insights into WAN performance and across the full stack.

Key differentiators of the Juniper SD-WAN, driven by Mist AI solution

Tunnel-Free

Juniper SD-WAN uses Session Smart Networking to deliver secure, encrypted connectivity without the added data overhead and complexity of legacy, tunnel-based networks. Advancements in IP routing allow Juniper SD-WAN to assure better data integrity, confidentiality, and authentication than a traditional IPSec tunnel, while achieving 30-50% more usable bandwidth improving application performance, user experience, and ROI.

AI-Driven with Full Stack Integration

Juniper SD-WAN delivers the best user experience for not just those on the network, but also the admins who run it. With a unified platform for Wired, Wireless, and SD-WAN, managing the full stack branch has never been easier. With Mist AI, getting new sites up and running is fast and scalable with automated templating and true zero touch provisioning. Once deployed, IT managers get minute-by-minute insight into WAN link performance and application health, correlated across the Wired and Wireless domains. Troubleshooting becomes as simple as engaging the industry's first AI assistant, Marvis, who can instantly and accurately pinpoint any disruptions to the user experience and provide recommended actions. The result is simplified operations and a drastically reduced MTTR.

Session Awareness

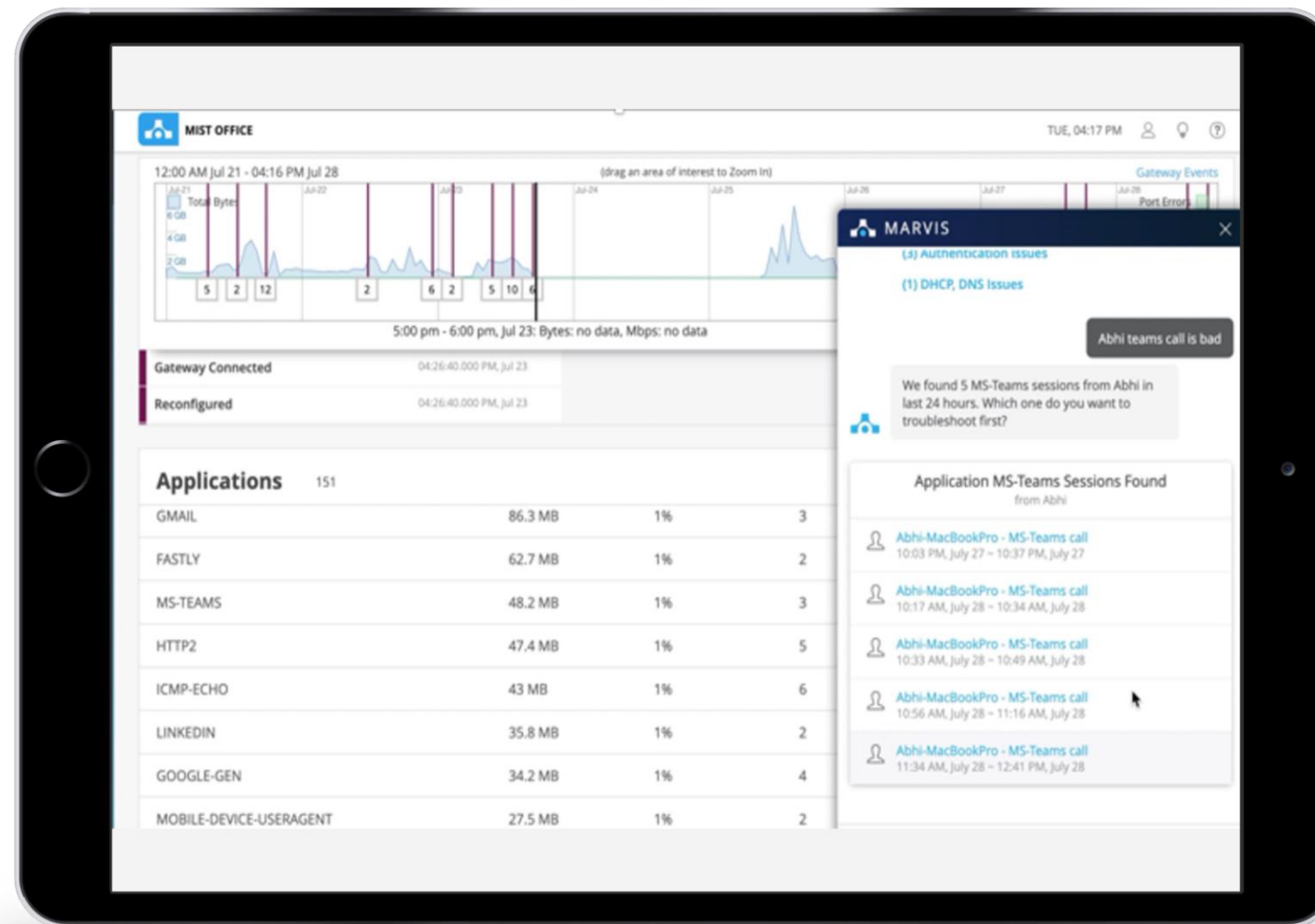
Juniper's AI-driven SD-WAN takes application awareness to the next level with session awareness. Session Awareness provides greater context so that routing decisions are based on real-time policies and performance rather than static network policies on a per tunnel basis. This enables the network to better adapt to network conditions and can instantly reroute traffic without ever interrupting the user experience.

Zero trust and SASE Ready

AI-driven SD-WAN is inherently zero trust secure and SASE ready. With deny-by-default access policies, built in firewall capabilities, fine-grained segmentation, IDS/IPS and URL Filtering, the solution protects users and data from client to cloud. For a completely SASE solution, AI-driven SD-WAN also seamlessly integrates with Juniper or third-party SSE.

AI-Driven Enterprise: Driven by Mist AI.

Juniper's wired, wireless, network access control, and SD-WAN solutions are all driven by Mist AI. As a result, they all leverage best-in-class AIOps for **client-to-cloud automation, insight, and assured actions that deliver the following unique attributes:**



- **Set, monitor, and enforce service levels** across the LAN/WLAN/WAN for optimal user experiences (by device, user, group, and location).
- **Proactive automation** through prescriptive recommendations, with closed-loop verification when actions are taken.
- **Anomaly detection** to quickly identify and fix new issues (before users know they exist).
- **AI-driven actions** through Self-Driving Network™ remediation, when possible, to fix problems proactively and avoid common issues associated with human error.
- The only **AI-driven Virtual Network Assistant (Marvis)**, which uses natural language processing (NLP), natural language understanding (NLU), and a conversational interface for unsurpassed insight and automated help desk functions.
- **Deploy with an AI-driven Enterprise expert** to accelerate and guide planning, migration, training, and provisioning specific to your network.

Automated WAN.

For many large organizations, their WAN is essential for linking their offices and data center facilities with reliable connectivity, and for employees to use mission-critical applications.

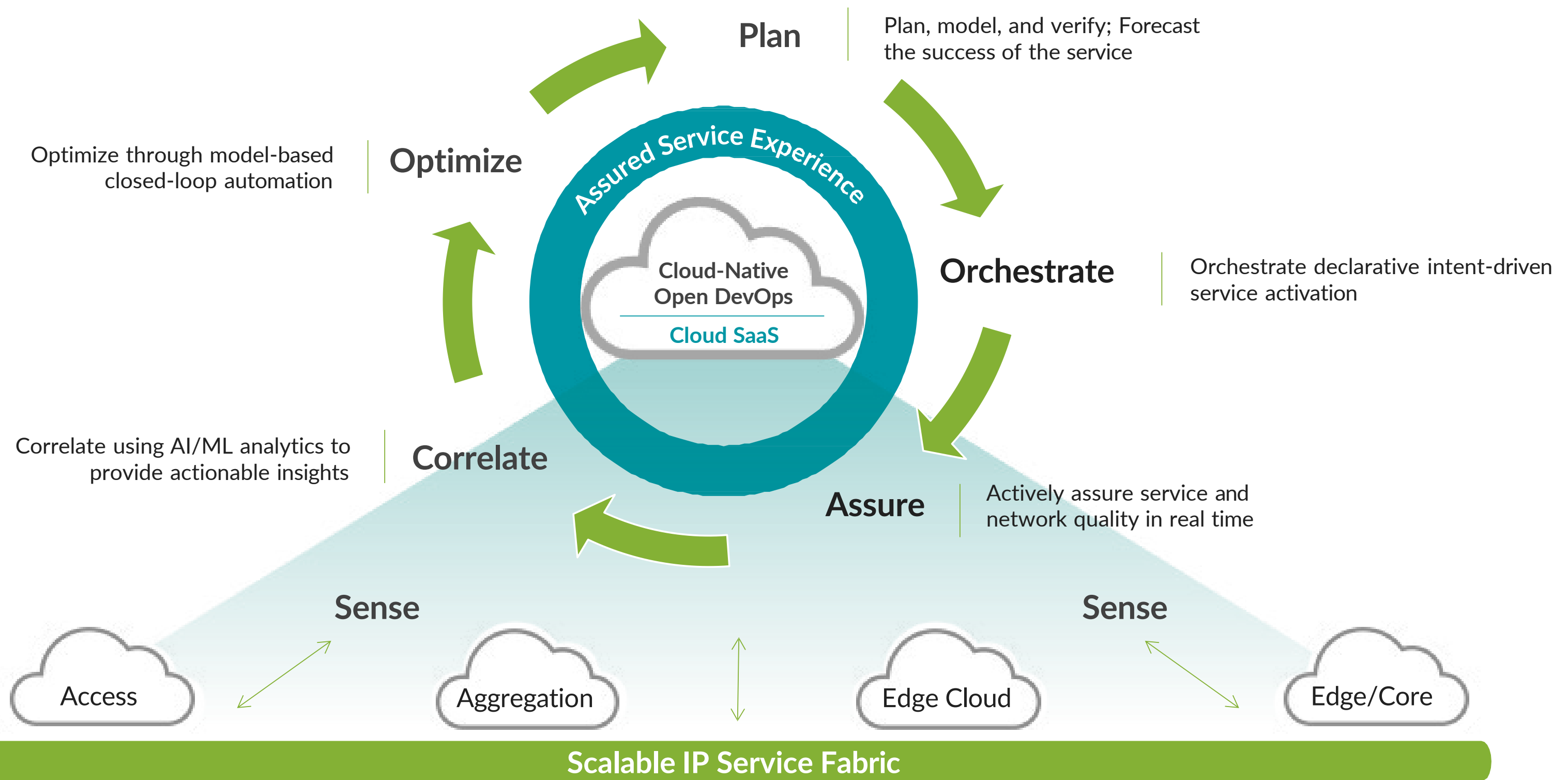
The enterprise WAN is critical in delivering the uptime, resiliency, and agility required to ensure the organization can scale and adapt technology operations as its business changes and manage security risk.

Automation lays the foundation for a self-healing network, ultimately resulting in a superior user experience.

Key differentiators of the Juniper solution for automated WAN:

-  **Agility for the unknown.**
With the inherent programmability of the Juniper Trio Chipset, Juniper's automated WAN solution is like a Swiss Army Knife, giving you virtually endless use case versatility and flexible bandwidth on-demand.
-  **Intent-driven automation.**
Juniper Paragon Automation delivers closed-loop automation that translates business intent into service performance, assuring your customers receive a differentiated experience throughout their time with you.
-  **Threat-aware by design.**
Juniper MX Series is the industry's first and only platform to deliver routing and advanced security services, all in one. DDoS protection, stateful firewall, CGNAT, URL filtering, and DNS sinkhole provide effective security without performance degradation.
-  **Experience-first deployment.**
Juniper services custom built for Paragon Automation deployment puts a seasoned expert on your team to assess, design, and test your automated WAN.

Juniper Paragon Automation Powers the WAN.



Cloud-Ready Data Center.

Modern data center networking solutions need to provide the agility and flexibility associated with cloud-like infrastructure and cloud operational models. It's not about building better networks, it's about making networking better. It's the shift from merely moving packets to making it easier to manage and operate. It's about driving end user experience and operator experience through automation and assurance. And it's bringing to life the big idea of simplicity across the entire data center infrastructure.

Key differentiators of the Juniper solution for the automated data center:

A world class portfolio of data center switching.

Juniper QFX and PTX Series continue to lead the industry with a switching portfolio that leverages both merchant and custom silicon delivering best-in-class throughput and scalability, including 400G interfaces, the open programmability of the Junos® OS, and the widest range of EVPN-VXLAN and IP fabric capabilities.

One unified, multivendor solution for automation and assurance.

Juniper Apstra is the only closed-loop fabric management with a single source of truth extending from design (Day 0), through deployment (Day 1), to assured operations (Day 2+). Simply describe what is needed and the software sets up the network accordingly and assures continuous operation as intended, with built-in change control and proactive notifications of network issues.

A best-in-class open-source SDN overlay.

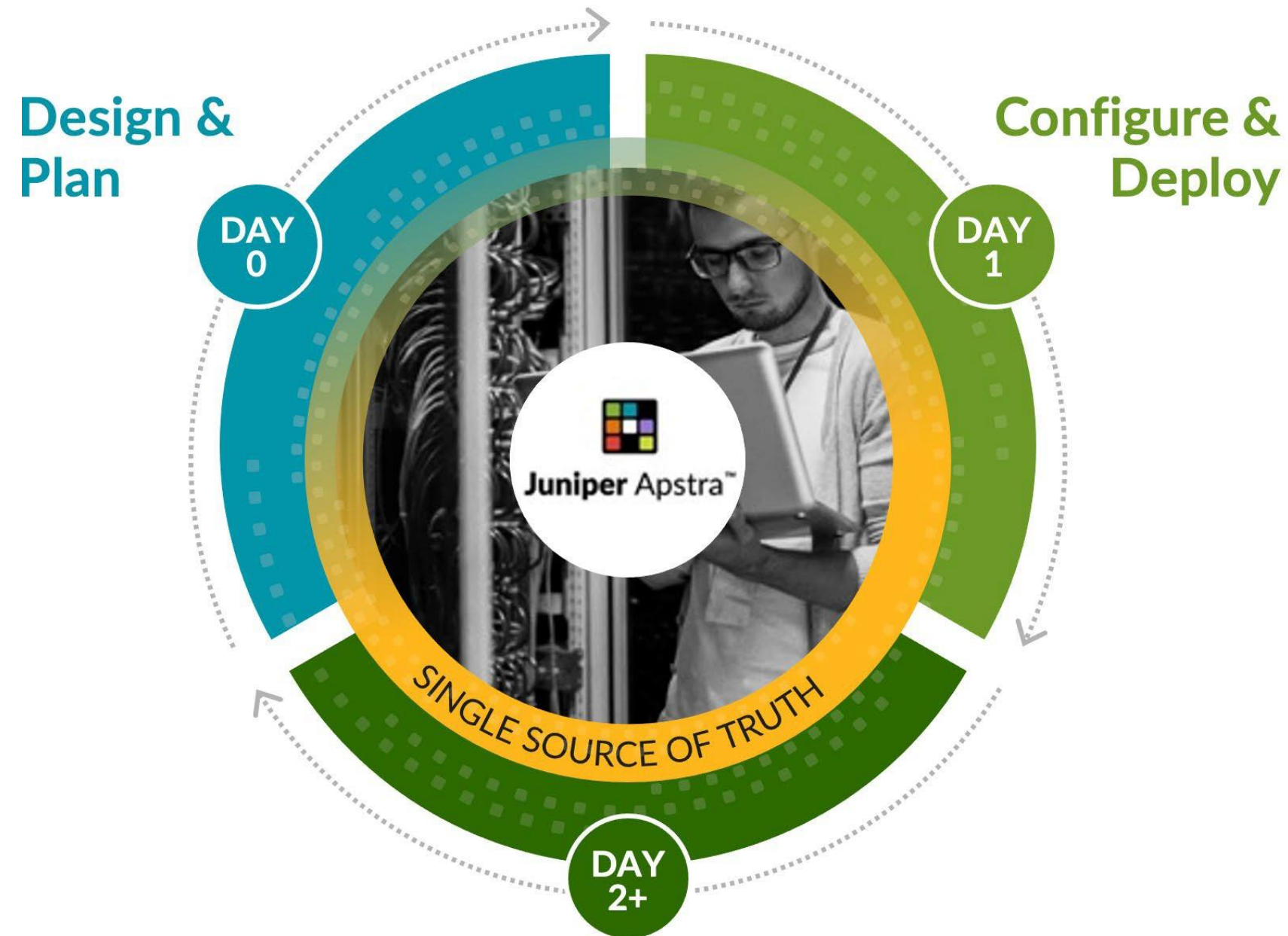
Contrail Networking delivers for common control over networking and security across private and public clouds for Kubernetes, bare metal, and virtual machine workloads, extending network automation into DevOps workflows.

Zero trust data center.

Juniper provides segmentation, user and application-based traffic policies, and threat prevention services to enable a zero trust data center. Juniper SRX firewalls prevent unauthorized users and malware from accessing the data center at the edge, security subscriptions on vSRXs within the data center protect traffic inside using identity-based policies, and the cSRX provides containerized security that is used to protect individual applications and workloads.



The Experience-First Data Center



- ✓ Reliability ► Speed
- ✓ Experience Intent-based Networking ► 320% ROI
- ✓ Multivendor Strategic Flexibility
- ✓ Security

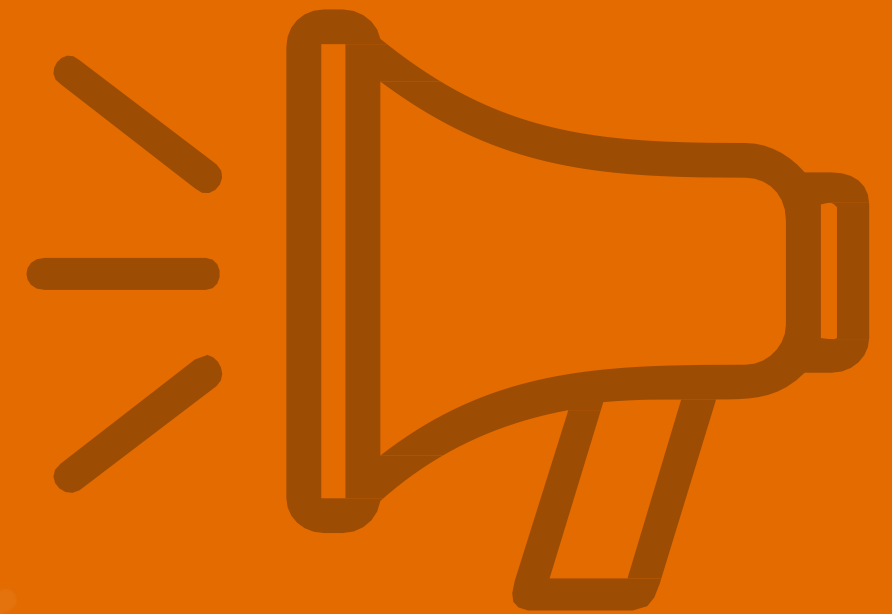
Juniper Services Puts Your Experience First.

Juniper is committed to enabling innovation, automation, and data-driven insights as we align technology and AI across our comprehensive suite of network lifecycle services. With a customer-first focus, we'll help you achieve success with your network strategy and reach your business goals.

- **Advisory Services.**
Strategically plan for network modernization success while reducing risk.
- **Deployment Services.**
Simplify how you build and deploy networks so you can realize value faster.
- **Migration Services.**
Transition with confidence to new networking technologies.
- **Optimization Services.**
Rapidly validate new network capabilities and accelerate deployment.
- **Support Services.**
Efficiently manage your network and reduce operating expenses.
- **Education Services.**
Get the skills you need to get certified or excel with Juniper solutions.



Real Results Real Experiences



Real Results. Real Experiences.

Optimizing IT experiences saves time and money, while enabling IT departments to best align with key business objectives. For example, the following enterprise customers have all benefited from Juniper's experience first approach:

- ✓ ServiceNow maximized employee productivity by **eliminating over 90% of all user-generated Wi-Fi trouble tickets.**
- ✓ A major telco deployed Juniper across 2,400 retail locations to ensure customers could quickly and reliably transfer data between phones when making a new purchase. This was critical to **ensuring customer satisfaction in a highly competitive retail environment.**
- ✓ For a web services company, automation in the data center led to game changing agility – tasks taking two weeks in the past now only take two hours – **a 99% improvement.**
- ✓ The Orlando VA Medical Center combined Wi-Fi, virtual Bluetooth LE and IoT to **track assets, provide a better network experience for the Veteran and prevent dementia patients from leaving facilities unattended.**
- ✓ The City of Philadelphia implemented a threat-aware Juniper network to reduce risk and empower both city workers and visitors with **superior smart city services.**
- ✓ Students at Dartmouth are getting **reliable wired/wireless connectivity everywhere on campus.**
- ✓ Fans all over the US can stream Pac-12 Networks soccer matches, football games, track meets, and more, with **high-quality video and no glitches.**
- ✓ A national healthcare system is saving **30% of OpEx** by switching from MPLS to a centrally managed Juniper SD-WAN.

Juniper simplifies operations and puts a spotlight on users for the best end-to-end experiences – from client-to-cloud. That level of automation, insight, and self-driving actions simply didn't exist before, and can only be achieved with Juniper.

A new era of Experience-First Networking is upon us, led by Juniper. Is your network ready?

EXPERIENCE IT FOR YOURSELF →



Driven by
Experience™

Corporate and Sales Headquarters
Juniper Networks, Inc.
1133 Innovation Way
Sunnyvale, CA 94089 USA
Phone: 888.JUNIPER (888.586.4737)
or +1.408.745.2000
Fax: +1.408.745.2100
www.juniper.net

APAC and EMEA Headquarters
Juniper Networks International
B.V. Boeing Avenue 240
1119 PZ Schiphol-Rijk
Amsterdam, The
Netherlands Phone:
+31.0.207.125.700
Fax: +31.0.207.125.701

PN: 7400137-003-EN

Copyright 2023 Juniper Networks, Inc. All rights reserved. Juniper Networks, the Juniper Networks logo, Juniper, and Junos are registered trademarks of Juniper Networks, Inc. in the United States and other countries. All other trademarks, service marks, registered marks, or registered service marks are the property of their respective owners. Juniper Networks assumes no responsibility for any inaccuracies in this document. Juniper Networks reserves the right to change, modify, transfer, or otherwise revise this publication without notice.

